

Customer :

customer

Customer part :

customer part

Comment :

Comment

S1=8.13

S2=8.82

Tmax=455

Tp S2=494.0

PI=0.48

HI=120

Sample =1774.30

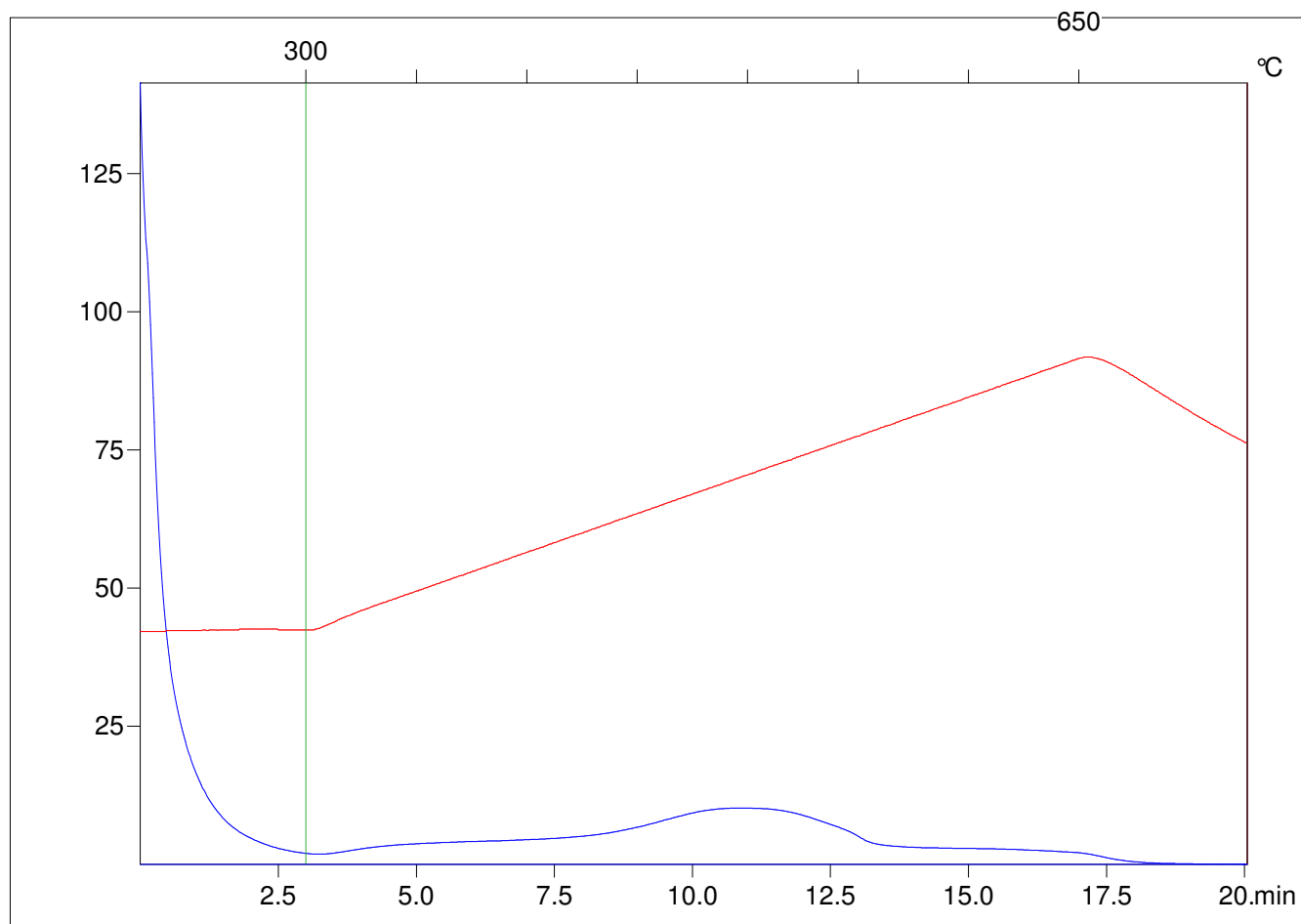
Method =Bulk Rock

Cycle=Basic

KFID(10*9)=1444

Qty =70.7

TOC=7.35



C:\VINC\PK3_1792\PK052.R00 : FID pyrolysis graphic

State

Pyro Status

Oxi Status